



GSH Identification Solutions B.V.

E-mail [info@gsh-id.nl](mailto:info@gsh-id.nl)

Tel. 0184 421 859



## Optimise patient care & facility efficiency

Healthcare identification guidebook

# Intro

Reliable identification and safety solutions enable highly skilled professionals to **deliver quality care and service in the most efficient way.** Patient identification, treatment tracking, sample traceability and medical device availability can become much more efficient with the right labels, signs and wearables.

This guide offers a high-level overview of **reliable identification and safety solutions** Brady offers to healthcare customers to **support safe, efficient and compliant workplaces and operations.**

We are looking forward to building a strong relationship with you too.



# Traceability, safety and integrated identification solutions

Brady supplies reliable identification and safety solutions to support safe, efficient and compliant workplaces and operations.

## **Traceability identification:**

track & trace patient treatment, biological samples, medical tool- and device production lots to support safety, efficiency and compliance goals.

## **Safety identification:**

clearly inform or caution medical & technical staff, patients and visitors to support a safe and efficient working environment.

## **Integrated identification solutions:**

fully automate identification and enable professionals to increase their efficiency even further.

# CONTENTS

- 5** Traceability identification
  - 6** RFID labels
  - 7** Smart sensing labels
  - 8** Laboratory sample labels
  - 9** Syringe labels
  - 10** Vaccine labels
  - 11** Asset identification
  - 12** Device component labels
  - 13** Anti-counterfeit labels
  - 14** Anti-tamper labels
  - 15** Medical seals & bags
  - 16** Wristbands

- 17** Safety identification
  - 18** GHS/CLP labels
  - 19** Floor marking
  - 20** Spill control
  - 21** Safety signs
  - 22** Signs
  - 23** Pipe marking
  - 24** Lockout/Tagout
- 25** Integrated identification solutions
  - 26** Automate identification
  - 27** Design, print and apply identification labels
    - 28** Design your own labels, tags & signs
    - 29** Print & apply your own labels, tags & signs

# Traceability identification

Track & trace patient treatment, biological samples, medical tool - and device production lots with reliable labels, wristbands and tags to achieve increased safety, efficiency and compliance goals.

**Contact us for samples and a printing demo online or at your premises.**

## RFID labels

Enable real-time tracking



- supports automated patient or item tracking
- supports fast shipment completeness checks
- can be linked to organisation databases

## Smart sensing labels

Temperature reading via radiofrequency



Temperature Label (UHF)



[www.bradyeurope.com](http://www.bradyeurope.com)

- can help prevent component overheating
- supports cold chain protection
- applicable to many item surfaces

**Passive temperature sensing triggered by RFID scanners!**

# Laboratory sample labels

Easily trace any sample



- can resist liquid nitrogen, freezer, autoclave
- can resist laboratory chemicals
- available to fit any sample container

Vial tube labels can be printed and applied automatically!





## Syringe labels

Easily recognise syringe contents



- comply with the FMD Directive 2011/62/EU
- protect patient safety
- trace origin & production date

## Vaccine labels

Traceability throughout supply chains



- easily track origin and production date
- stays attached in liquid nitrogen and freezers
- remains legible throughout supply chains

**Label printing can be automated using data from your ERP or LIMS!**

# Asset identification

Easily identify & trace assets



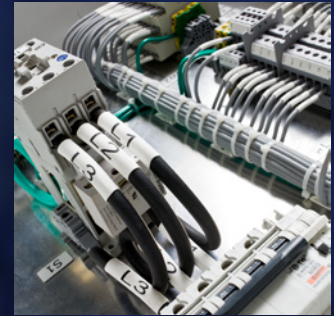
- supports efficient maintenance & use
- resists rigorous anti-bacterial cleaning
- stays attached and remains legible

Easily track asset locations with our FlexTrak software!

Initiate a guided asset inspection with our SafeTrak software!

## Device component labels

Efficient installation & maintenance

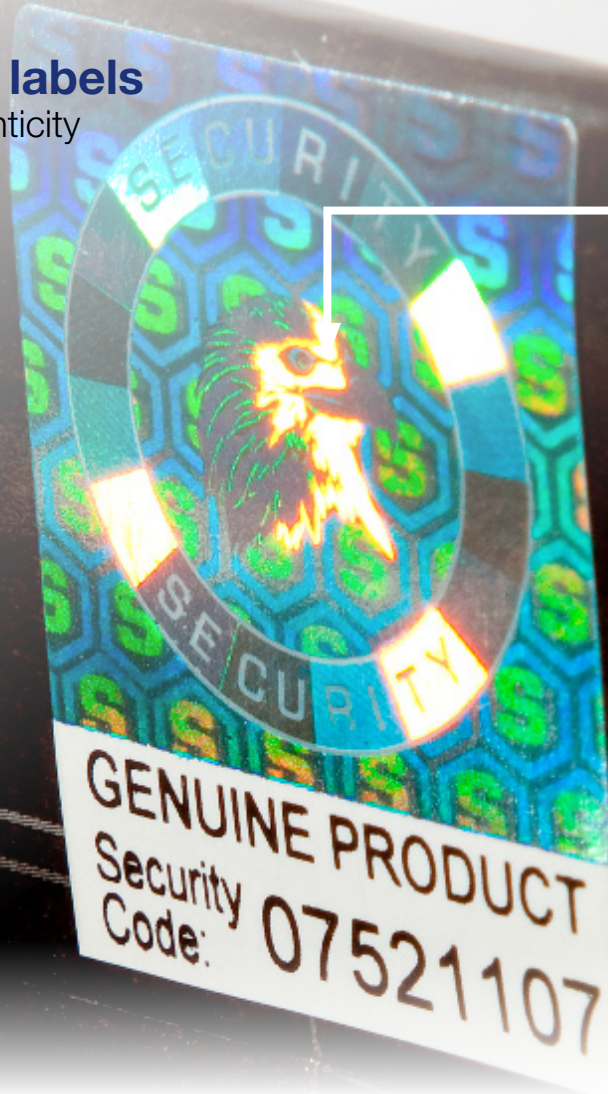


- supports device installation speed
- easy component tracking & reordering
- component supply chain tracking
- supports compliance with European Medical Device Regulations

Can be augmented with RFID technology!

# Anti-counterfeit labels

Protect product authenticity



- overt technologies to deter counterfeiting
- covert technologies to keep anti-counterfeiting confidential (visible with special tools only)
- digital technologies to unveil counterfeit attempts

Easily verify component authenticity with a smartphone and encrypted serial numbers!



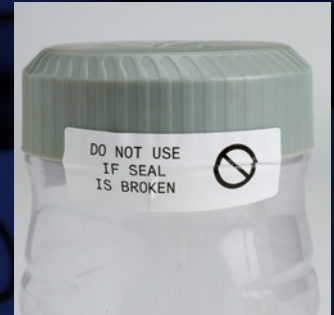
## Anti-tamper labels

Visual tampering evidence



PROPERTY OF  
CELL CANCER RESEARCH  
INSTITUTE

ASSET No.



- visualise product & label tampering
- visualise tampering with heat, cold or water
- can leave a footprint or be cleanly removable

## Medical seals & bags

Protect sample integrity



- seal samples during transport
- provides visual tampering evidence

Our fabric bag enables RFID scanning while still sealed!

# Wristbands

Easily check patient history



- easily track treatment history
- increase patient admission efficiency
- increase patient safety

**Quickly identify patients on entering their room with RFID technology!**



## Safety identification

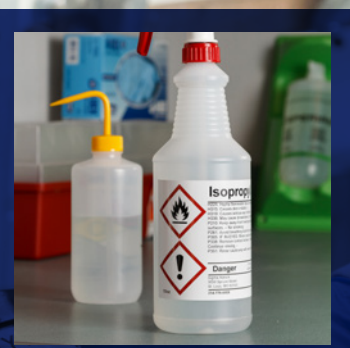
Clearly inform or caution medical & technical staff, patients and visitors with reliable signs, labels, pipe markers and tags where it matters to support a safe and efficient working environment.

**Contact us for samples and a printing demo online or at your premises.**



# GHS/CLP labels

Compliant chemical packaging



- comply with dangerous substances labelling
- printable at your premises

Enter chemical name or CAS-number in our app to print a compliant label!

## Floor marking

Increase facility safety & efficiency



- visually organise facility operations
- create caution and keep clear areas
- separate human & motorised traffic

Easily draw a straight line to increased efficiency!



## Spill control

Quickly remove contamination hazards



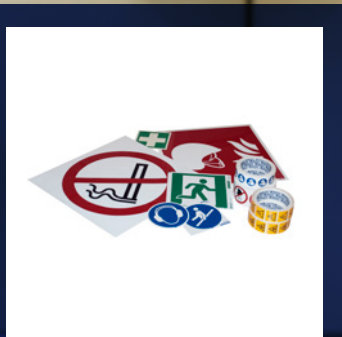
- be ready for leaking chemicals, samples and machines
- quickly address a spill during processing
- can be used proactively and reactively

Also available in practical spill kits & stations!



# Safety signs

Vital information where it matters



- easily caution, warn & inform
- visualise evacuation routes
- easy to print at your premises

Also available in reflective and photoluminescent materials!



## Facility signs

Easy wayfinding



**Cardiology**

WHEEL CHAIR ACCESS ON FIRST FLOOR

- clearly identify rooms and their purpose
- facilitate wayfinding

**Printable in your facilities!**

## Pipe marking

Increase maintenance & operations efficiency



- quickly identify pipe contents
- share flow direction, source & destination
- customisable to any standard, including ISO 20560

Can be mounted or applied directly on pipes!



Safety identification

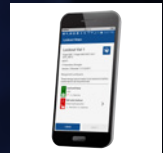
# Lockout/Tagout

Safer machine interventions



- easily neutralise energy for increased maintenance safety
- increase efficiency with customisable shadowboards for IPA resistant environments
- get excellent safety procedures as a service

Easily manage, update and communicate procedures with LINK360!





# Integrated identification solutions

Automate your labelling in a controlled way with data directly from your ERP or LIMS. Let Brady integrate RFID and scanning capabilities to fully automate identification, and enable your professionals to increase their efficiency even further.

**Contact us with your identification needs so we can provide you with automation options.**



# Automate identification

Automate labelling & identification



- increase efficiency with automated identification
- save time with automated labelling
- our engineers & developers provide a complete solution

**Discuss your identification needs with our experts!**

# Design and print identification labels

Almost every solution shown in this guide can be printed at your premises with a label printer from Brady. A few rolls of blank labels in your inventory will create a rich variety of identification solutions to increase safety, efficiency and compliance in your workplace.

**Contact us for a printing demo online or at your premises.**

# Design your own labels, tags & signs

Select the apps you need



- design any label with Brady Workstation
- automate label data
- add logos, barcodes, symbols & serial numbers



**Get a 30-day  
free trial!**

# Print & apply your own labels, tags & signs

Increase labelling flexibility

- easy to use with auto-recognisable label materials
- batch print, serialise, barcode
- auto-apply options
- wide range available including mono- and full colour, benchtop and portable printer models



Get a free demo at your premises!



**Africa**

Randburg, South Africa  
Tel: +27 11 704 3295  
africa@bradycorp.com

**Benelux**

Zele, Belgium  
Tel. +32 (0) 52 45 78 11  
benelux@bradycorp.com

**Central & Eastern Europe**

Bratislava, Slovakia  
Tel. +421 2 3300 4800  
central\_europe@bradycorp.com

**Denmark**

Odense  
Tel. +45 66 14 44 00  
denmark@bradycorp.com

**France**

Roncq  
Tel. +33 (0) 3 20 76 94 48  
france@bradycorp.com

**Germany, Austria & Switzerland**

Egelsbach, Germany  
Tel. +49 (0) 6103 7598 660  
germany@bradycorp.com

**Hungary**

Budaörs  
Tel. +36 23 500 275  
central\_europe@bradycorp.com

**Italy**

Gorgonzola  
Tel: +39 02 26 00 00 22  
italy@bradycorp.com

**Middle East FZE**

Dubai, UAE  
Tel. +971 4881 2524  
me@bradycorp.com

**Norway**

Kjeller  
Tel. +47 70 13 40 00  
norway@bradycorp.com

**Russia**

Moscow  
Tel: +7 495 269 47 87  
central\_europe@bradycorp.com

**Spain & Portugal**

Madrid, Spain  
Tel. +34 900 902 993  
spain@bradycorp.com  
portugal@bradycorp.com

**Sweden, Finland, Baltic States**

Kista, Sweden  
Tel. +46 (0) 8 590 057 30  
sweden@bradycorp.com

**Turkey**

Istanbul  
Tel. +90 212 264 02 20 / 264 02 21  
turkey@bradycorp.com

**UK & Ireland**

Banbury, UK  
Tel. +44 (0) 1295 228 288  
uk@bradycorp.com

**We identify and protect people,  
products and premises.**

**[www.bradyeurope.com](http://www.bradyeurope.com)**

25.01.2021

EUR-M-172-EN

© 2021 Brady Worldwide inc. All rights reserved

Uw Brady distributeur  
GSH Identification Solutions B.V.  
Lelystraat 93 K  
3364 AH Sliedrecht  
Tel. +31 (0)184 421 859  
[www.gsh-id.nl](http://www.gsh-id.nl)  
[info@gsh-id.nl](mailto:info@gsh-id.nl)

